

Remscan NewsPro XT (beta)

Here is a quick reference as to what the Beta version can do. (Uniden 996XT).

** Program is 'TOUCH-SCREEN' friendly.

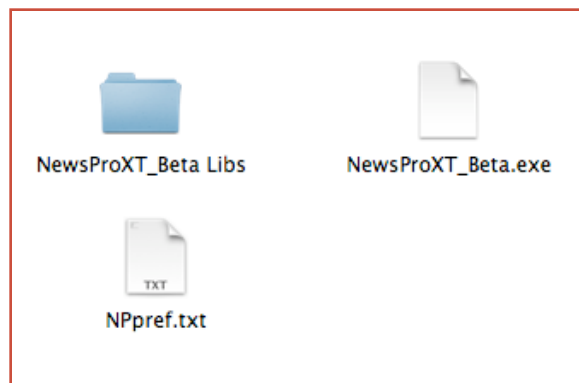
- Connect to scanner using Comm ports or via **Internet** (using serial port server)
- Scan 'Programmed' channels in scanner. (Not Uniden pre-programmed systems such as Public Service, TV, Police) These need to be locked out.
- '**Loop-Scan**' a System. Scanner stays in current SYSTEM when scanning.
- Stop scanning using the '**HOLD**' button
- Resume scanning using the '**SCAN**' button or the left / right arrowed buttons.
- Lock-out a channel using the '**L/O**' checkbox.
- Lock-out *systems*
- **NEW !!** 'Vol / Sql' button is RED when Volume is too low, and WHITE when too HIGH.
- **FIND** a channel by either the '**SYSTEM**' name, **GROUP** name or **CHANNEL** name.
- **HISTORY** list allows you to go back to a channel that was recently active (last 3)
- Remotely adjust Volume and Squelch levels.
- Direct frequency entry for temporary listening.

NEW !!

- Display virtual 'Scanner' front panel.

After installation:

These 3 items MUST stay together in a folder. You can create a shortcut of NewsProXT, and place it wherever it is convenient.



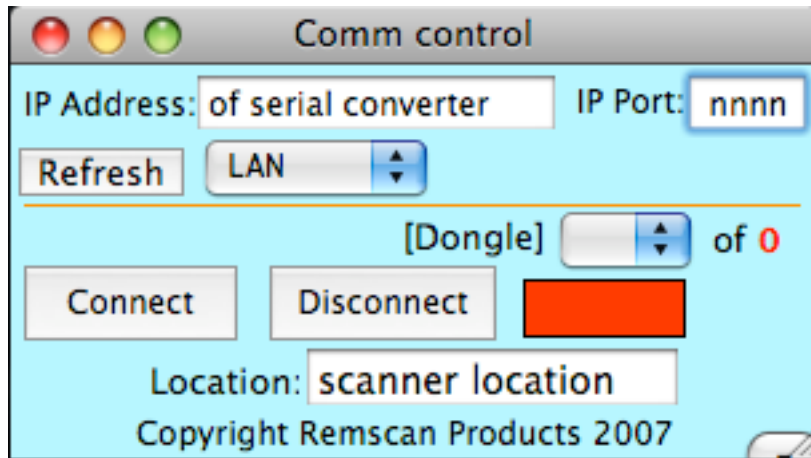
*Updated 8/26/11

-12

Remscan NewsPro XT (beta)

Communications window

Make sure the scanner is set to 57600 baud. (in the radio's menu)



If using comm ports, select in pulldown menu.

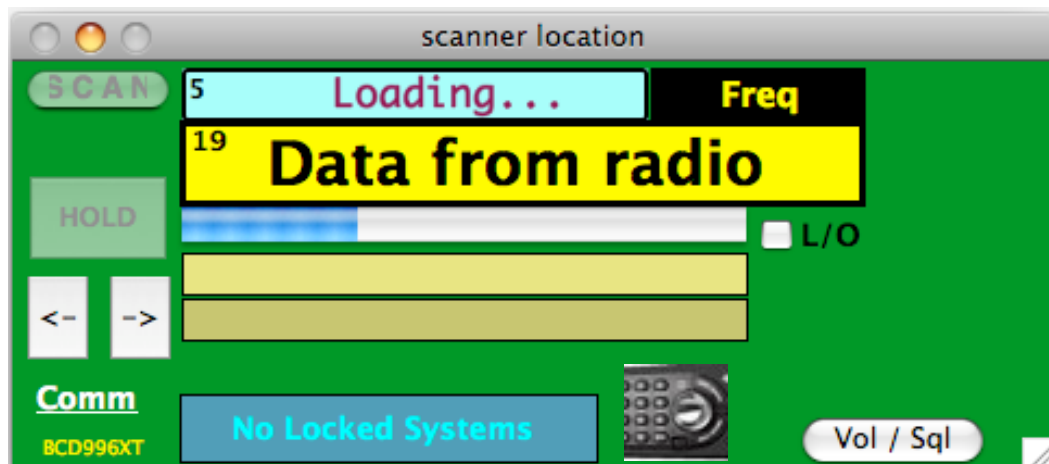
If using internet serial port server, select LAN and enter the IP address and port number.

The **RED** rectangle will turn **GREEN** when it 'CONNECTS' to the radio, or turn **RED** if it loses connection.

*If disconnected, press **CONNECT** button again.

***Use the COMM window to 'QUIT' the program (File.. pulldown)**

Click on the word '**Comm**' on the main screen to get back to this window.



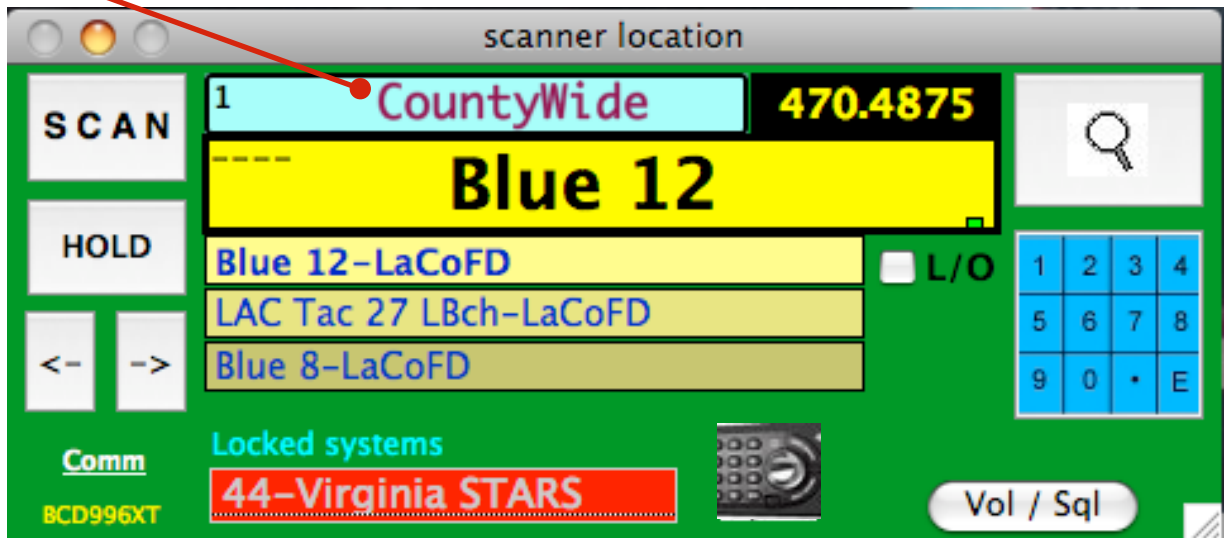
Once **CONNECT**ed, the main window will appear, and start transferring the radios information into the computer. This happens every-time you start the program. If there is a 'Disconnect' and you re-connect (temporary internet loss), the program will continue with the current information. (will not 'LOAD' again.)

You should see a green & red square in the lower right corner flash as the data is being loaded. (Red box when transmitting data, green when receiving data.)

Remscan NewsPro XT (beta)

SCANNING mode

Click here to **PROGRAM** radio (not covered in this document)



While scanning, the left four buttons are enabled.

HOLD stops the radio from scanning.

Once stopped, left/right arrows can move to the previous or next channel.

If the scanner stops on an active channel, the left/right arrow can be used to force the scan to resume. *A flashing STOP sign reminds you that you are holding on this channel.

The **BLUE** field (top) will show the SYSTEM or Group that the radio is on.

The **BLACK** field shows the frequency, talk group or P.L. frequency (automatic)

The longest field shows 'SCAN' or the name of the Channel/Talk-group that the radio is listening to. If there is no activity on the channel, the background color of the field is a dark yellow. When active, it changes to bright Yellow. *This should make it easier to know which scanner has an active channel when multiple scanners are on one screen* The top right corner of this field will display a 'D' if the signal is digital.

ATT is displayed if the attenuator is on.

If your radio is moved to a locked-out channel, the **L/O** box will be checked. You can press again to Un-lock.

The word '**Comm**' in the lower left can be pressed to reveal the communications window. (discussed on previous page) and to exit the program.

Remscan NewsPro XT (beta)

FIND window

FIND button (Magnifying Glass) brings up the FIND window.



Press the button of the first character in a **SYSTEM**, **GROUP** or **CHANNEL** name you want to listen to.

Remscan NewsPro XT (beta)

FIND listing



The window above was created after pressing the 'L' button.

The buttons on the left are a listing of 'SYSTEMS' starting with 'L'. The small number below each shows the number of channels in that system. (LAFD has 16)

GROUP selection -----

The button labeled 'Group' signifies that the buttons on the right are sorted by **Group** names (displayed in the orange tags under the Channel names.)

The **Group** 'LA Conv' is listed. The -Next- button is enabled because there are more listings with GROUPS starting with 'L'.

Pressing any of the Channel names (above the orange tag) will send the radio to that channel.

Channel selection -----

Pressing the -Group- button will change its name to **-Channel-**. Now the listings are by **Channel** name starting with 'L'. The Group names (orange area) will not be in a sorted order.



Remscan NewsPro XT (beta)

SYSTEM find

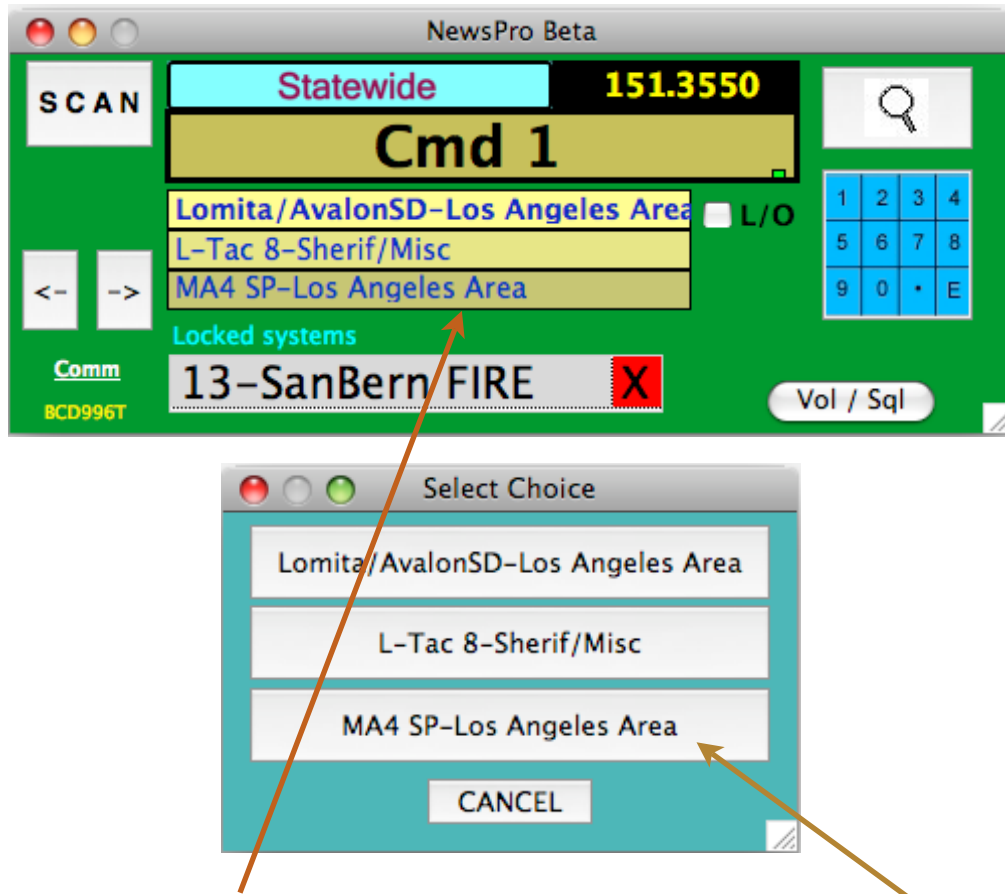


Pressing the SYSTEM button (LAFD) creates a channel list of all the LAFD channels in order of Channel name. The names in the orange tags are groups that were programmed into that SYSTEM.
(i.e. Group 'Dispatch' has 2 channels, North & South Mullholland.)

Pressing any of the Channel buttons will send the radio to that channel.

Remscan NewsPro XT (beta)

HISTORY window



A listing of the last 3 channels heard, are updated in this area. Pressing this History area will bring up a HISTORY window. This will have 3 buttons with the same names as in the History area. Pressing any of these buttons will send the radio back to that channel.

(Pressing CANCEL will exit the History function.)

Vol / Sql levels

Pressing the 'Vol / Sql' Button reveals the controls and levels for the Volume and Squelch. Press the <- or >- buttons to adjust.

'DONE' returns back to normal view. (or automatically) after 3 seconds)



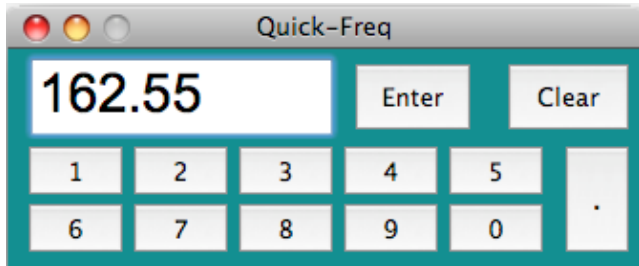
New ** The 'Vol / Sql' button color is RED when Volume is too low or White when too High.

Remscan NewsPro XT (beta)

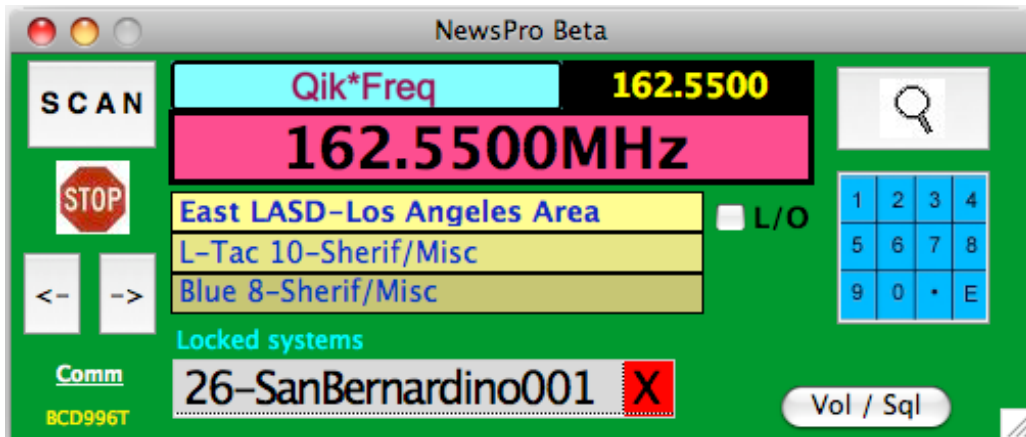
Qik- Freq (Direct frequency entry)

Clicking on the **BLUE** keypad reveals a keypad. This function allows a temporary listening frequency that will **not** be programmed into the memory. This function is valuable for example, when someone says 'Listen to '162.55' for a weather update'

The 'ENTER' button will not be enabled until the '.' (period) is entered in the frequency field.



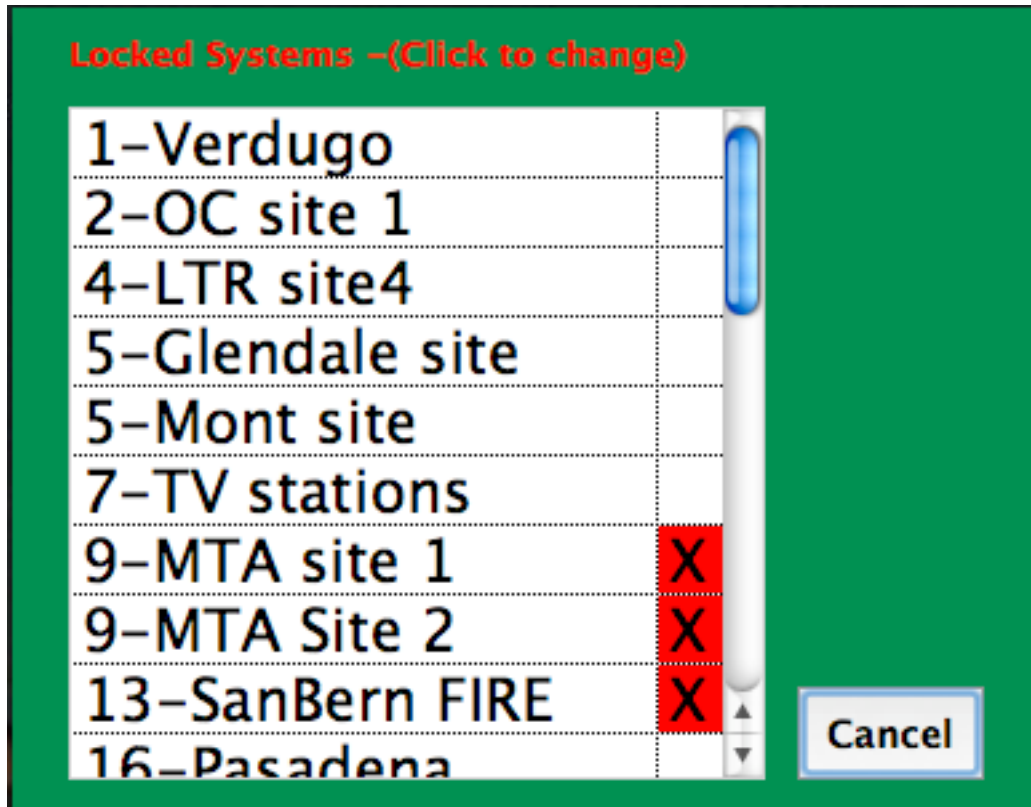
After 'Enter'ing, the frequency window on the main display will be Magenta. (to remind you that you are not listening to a programmed channel) Dimmed when no signal, and bright when there is one. Press 'SCAN' button to return to normal.



Remscan NewsPro XT (beta)

Locking out systems/Sites

The line at the bottom of the main display will increment through the systems that are locked out. If this needs to be changed (i.e. Lock or Unlock a system) click on that line, and a window (below) with the list of systems/Sites will appear.



The numbers at the beginning of each line is the 'Quick-Key' number assigned to that system when programmed. (by the user)

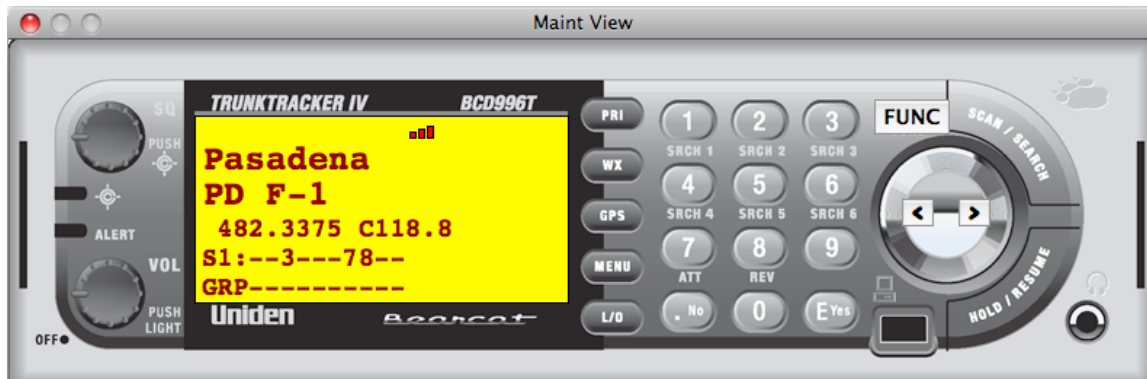
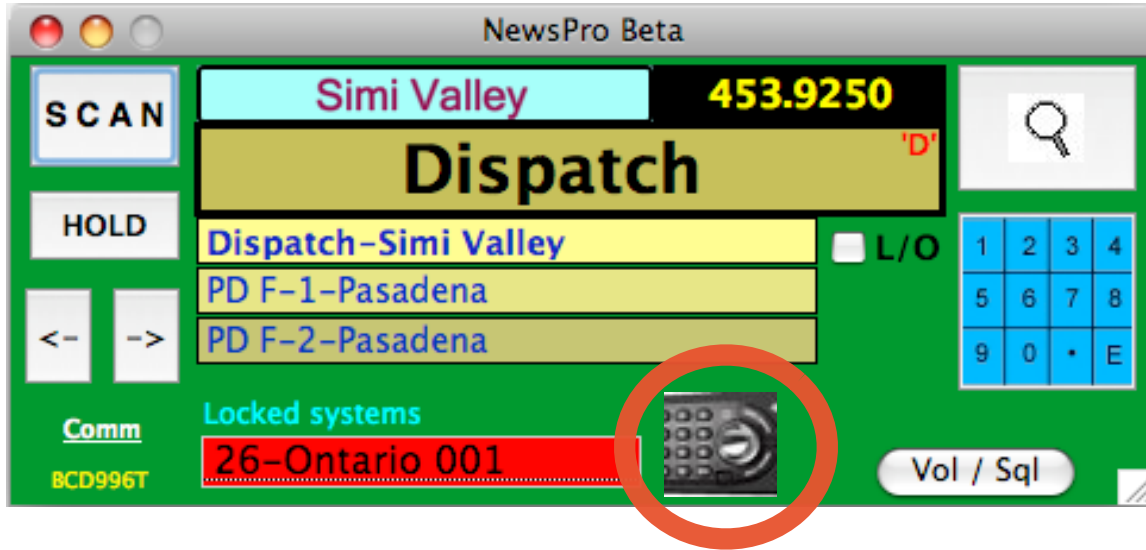
Clicking on a line will toggle its state (locked or unlocked) If multiple systems have the same 'Quick-key' number, they will be locked/unlocked as a group. (This is a function of the radio.) Above, MTA Sites 1 & 2 are grouped (#9 Quick-key) and SanBern Fire isn't (Quick-key 13). If you were to click on MTA site 2, both 1 & 2 will be unlocked.

If one of your systems doesn't appear in the list, it is because a 'Quick-key' was not assigned to it. That can be done in the programming mode.

Remscan NewsPro XT (beta)

Virtual Scanner

Pressing the 'Virtual' icon will bring up the Virtual Scanner.

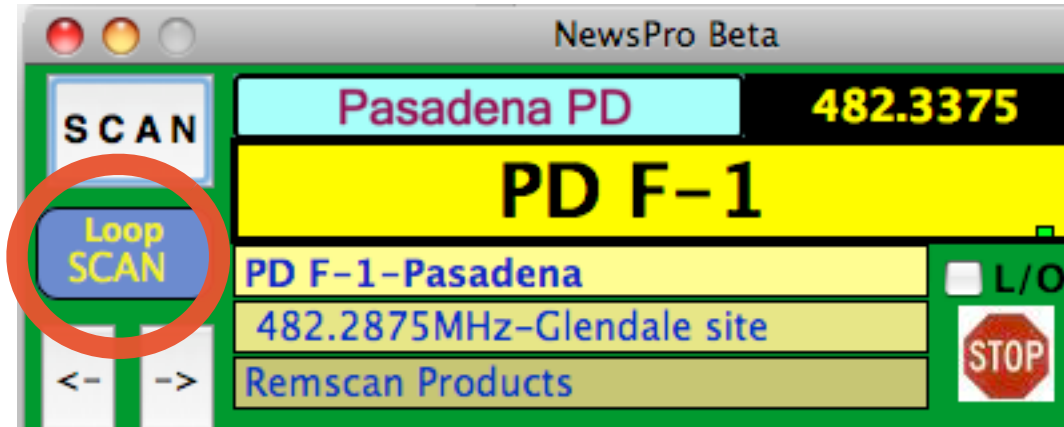


All of the buttons and knobs are operational. This mode will allow you to use the scanner as if it were in front of you. When through, press the standard CLOSE in the top corner of the window. (MAC version shown above. *Red dot*)

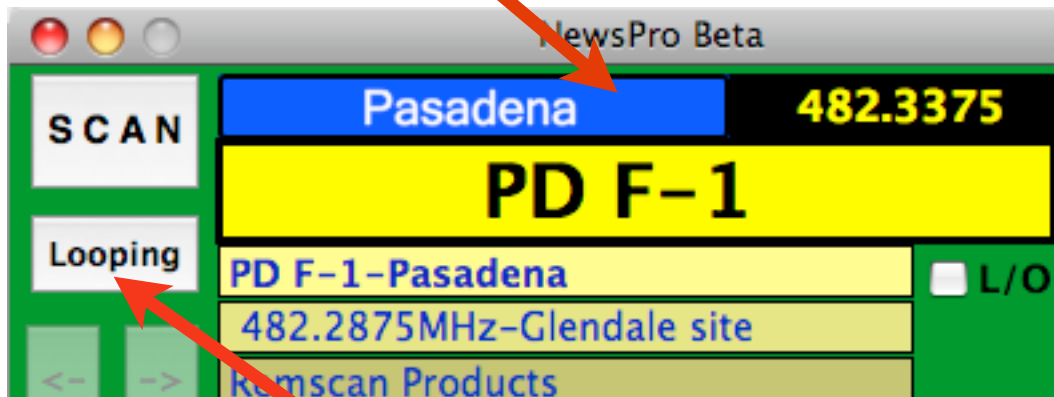
Remscan NewsPro XT (beta)

Loop - Scan

When the HOLD button is pressed, HISTORY channel is recalled or FIND is used, a 'LOOP SCAN' button will appear (Scanner is in a HOLD mode). This gives you the option to **scan only within the SYSTEM** that the scanner is presently HOLDing in. (If you press the SCAN button, the scanner will scan ALL unlocked systems.)



When the LOOP-SCAN is used, the SYSTEM name background color will change from powder-blue, to a dark-blue.



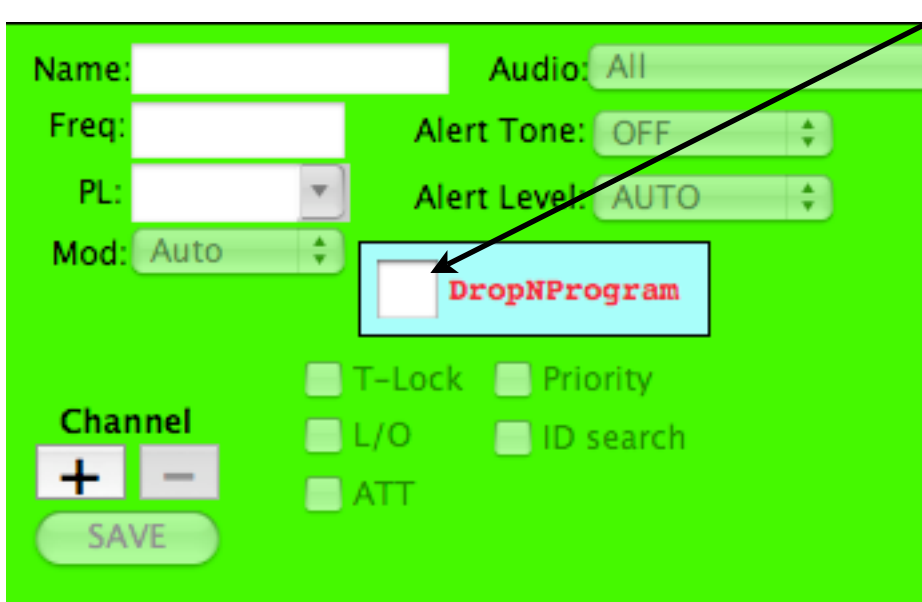
The HOLD button's name will alternate to **HOLD** , **Looping**, **HOLD**, **Looping**. *This is for a reminder that you are looping.*

Pressing the SCAN button at any time will return to scanning all systems.

Remscan NewsPro XT (beta)

Drop N Program

It is possible to program Conventional channels by highlighting frequency, PL and Tag information, and then Drag N Drop the text into the 'DropNProgram' box.



A window will appear with the data for your approval before you program into the radio.

The screenshot shows a window titled 'Drop N Program'. At the top left, there is a red box and the text '<- 'DROP' RadioRef data in HERE'. To the right, it says 'Conventional Channels'. Below this is a table with the following columns: Frequency, PL, Alpha Tag, and Description. The table contains six rows of data, each with a '+' in the first column.

	Frequency	PL	Alpha Tag	Description
+	483.33750	NONE	S-TAC 2	STAR TAC 2 - Metro / North / East Repeater
+	483.81250	NONE	S-TAC 3	STAR TAC 3 - Metro / West / South Repeater
	483.61250	NONE	S-TAC 4	STAR TAC 4 - Metro / South Repeater
+	483.61250	107.2	S-TAC 5	STAR TAC 5 - Clear Voice Tac
+	483.61250	141.3	S-TAC 6	STAR TAC 6 - Clear Voice Tac

Clicking the first column allows you to skip or include the row for programming. (If you have a duplicate, you can SKIP that line from being programmed.)

If a '+' is present, that line will be programmed. The Frequency, PL and Alpha Tag are the items that will be programmed. Clicking on any of the cells, allows you to edit its contents. The description column is available if you decide to edit the Alpha Tag data and need other data close in hand.

Pressing the 'PROGRAM' button at the bottom of the window starts the programming process. If needed, Drag N Dropping text into the box in the top-left will also add to this list.

Remscan NewsPro XT (beta)

Items to be finished:

- Programming the radio remotely (**95% finished**) but very useable.
- List channels that are Locked-Out
- Allow scanner info to be Saved or Loaded into a computer file.

John Bush
(714) 328-8000
www.remscan.com
email: johnbush@remscan.com
8/26/11